



# INSTALLATION GUIDE

---

## RAM PROMASTER

90" SIDE STEPS - PASSENGER/DRIVER

36" SIDE STEPS - DRIVER

## MODELS

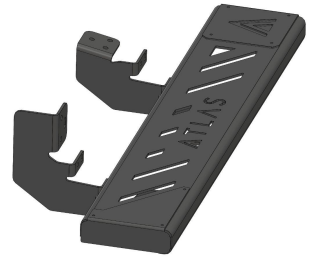
---



MARCHEPIEDS 90"  
CONDUCTEUR



MARCHEPIEDS 90"  
PASSAGER



MARCHEPIED 36"  
CONDUCTEUR

## TABLE OF CONTENTS |

	<b>WARNINGS</b>	<b>3</b>
	<b>MAINTENANCE</b>	<b>4</b>
	<b>REQUIRED MATERIALS NOT INCLUDED</b>	<b>4</b>
	<b>INSTALLATION</b>	<b>5</b>
<b>SECTION 1</b>	<b>90" SIDE STEPS PASSENGER/DRIVER</b>	<b>5</b>
<b>SECTION 2</b>	<b>36" SIDE STEPS DRIVER</b>	<b>18</b>

## SAFETY WARNINGS

---

**\*\*ATLAS RC disclaims all liability for injuries related to the installation, maintenance, or use of an ATLAS RC accessory\*\***

The initial assembly of a side step may take between 2 and 4 hours.

Always wear cut-resistant gloves and safety glasses.

If you have any doubts during assembly, stop the installation and contact your retailer.

## TECHNICAL WARNINGS

---

**\*\*FOR ALL BOLTS ASSEMBLED WITH NYLON LOCK NUTS, IT IS MANDATORY TO APPLY THE ANTI-SEIZE COMPOUND PROVIDED WITH YOUR HARDWARE KIT TO ENSURE THAT THE BOLT/NUT ASSEMBLY DOES NOT SEIZE.\*\***

- All bolts and nuts must be tightened by hand (using ratchets, Allen keys, and a torque wrench) according to the torque specifications indicated in this guide.
- Nylon lock nuts (Nylock) are used in the assembly of ATLAS RC accessories. Repeated tightening and loosening of this type of nut is not recommended. It is therefore important to follow the tightening sequence specified in this manual.

## GENERAL WARNINGS

---

- Limitation of Liability by ATLAS RC: ATLAS RC is not responsible for damages resulting from improper use, overloading, incorrect assembly, abuse, accidents, negligence, improper installation, theft, or unauthorized modifications.
- As the owner of an ATLAS RC accessory, it is your responsibility to review the company's Terms and Conditions on its website.
- Any modification or alteration to ATLAS RC accessories not approved by ATLAS RC may void the product warranty.
- The addition of components not approved by ATLAS RC may void the product warranty.

MAINTENANCE

1. All torque specifications must be verified after the first 100 km and 500 km driven following installation of the bracket.
2. Check that all hardware remains properly tightened annually.

REQUIRED MATERIALS NOT INCLUDED

EZLINER



METAL PAINT



Right-angle drill or right-angle attachment



# 90" SIDE STEPS PASSENGER/DRIVER

---



DRIVER



PASSENGER

90" SIDE STEPS PASSENGER/DRIVER

LIST OF HARDWARE INCLUDED BY MODEL



**17x**  
Metal Screw 5/16" x 1"



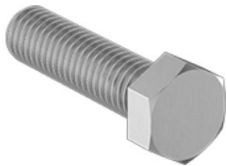
**16x**  
Washer 5/16"



**15x**  
Lock Washer 5/16"



**5x**  
Hex Head Self-Drilling  
Screw #14 x 1.25"



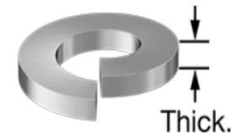
**10x**  
Bolt Hex  
1/4" X 1.25"



**26x**  
Washer 1/4"



**10x**  
Nylon Lock Nut 1/4"



**5x**  
Lock Washer 1/4"

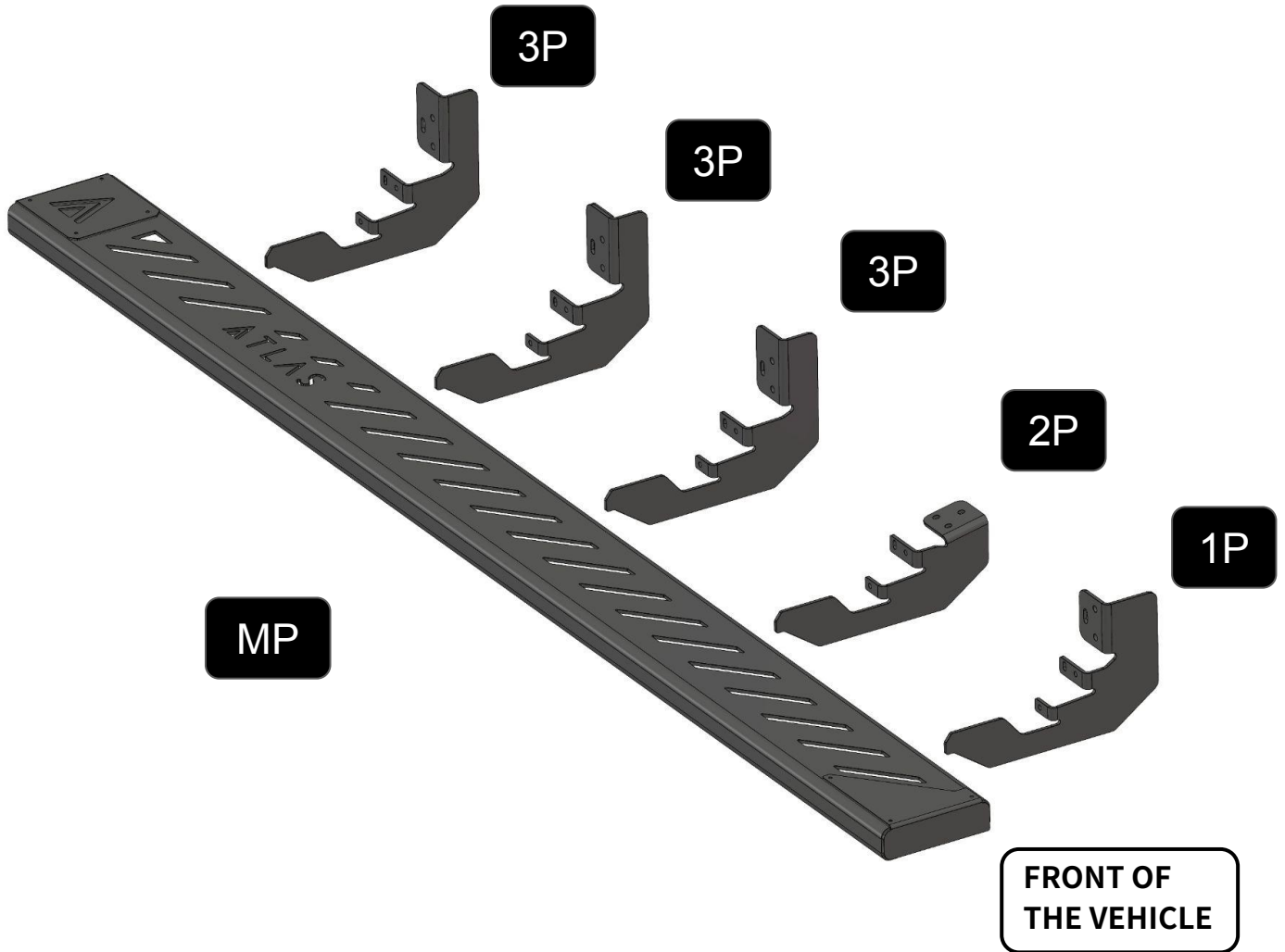


**1x**  
Anti-seize

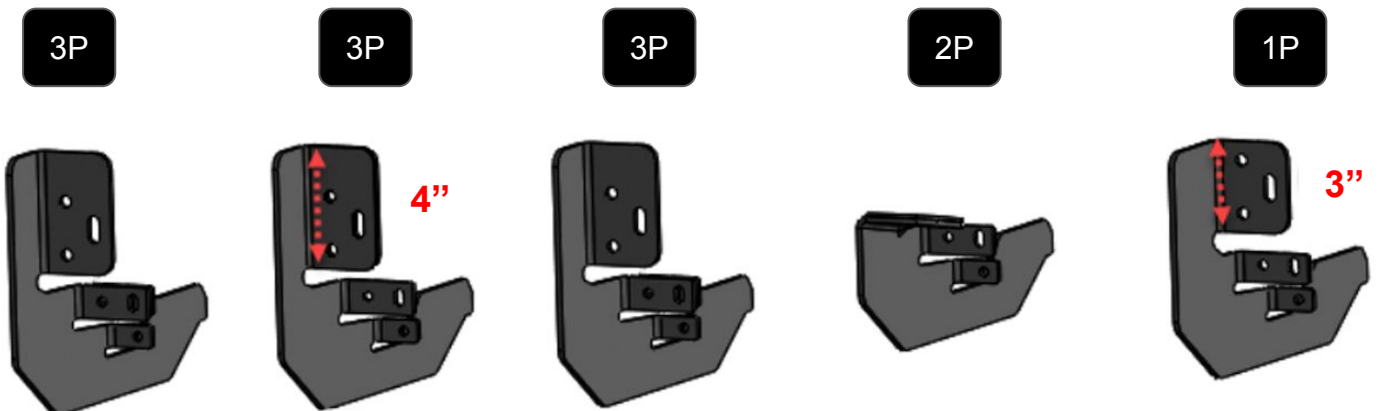
**\*\*IMPORTANT :** Apply anti-seize  
cto the threads of all bolts before  
installing the nuts\*\*

### 90" SIDE STEPS PASSENGER

PARTS INCLUDED ACCORDING TO YOUR SIDE STEP PURCHASE



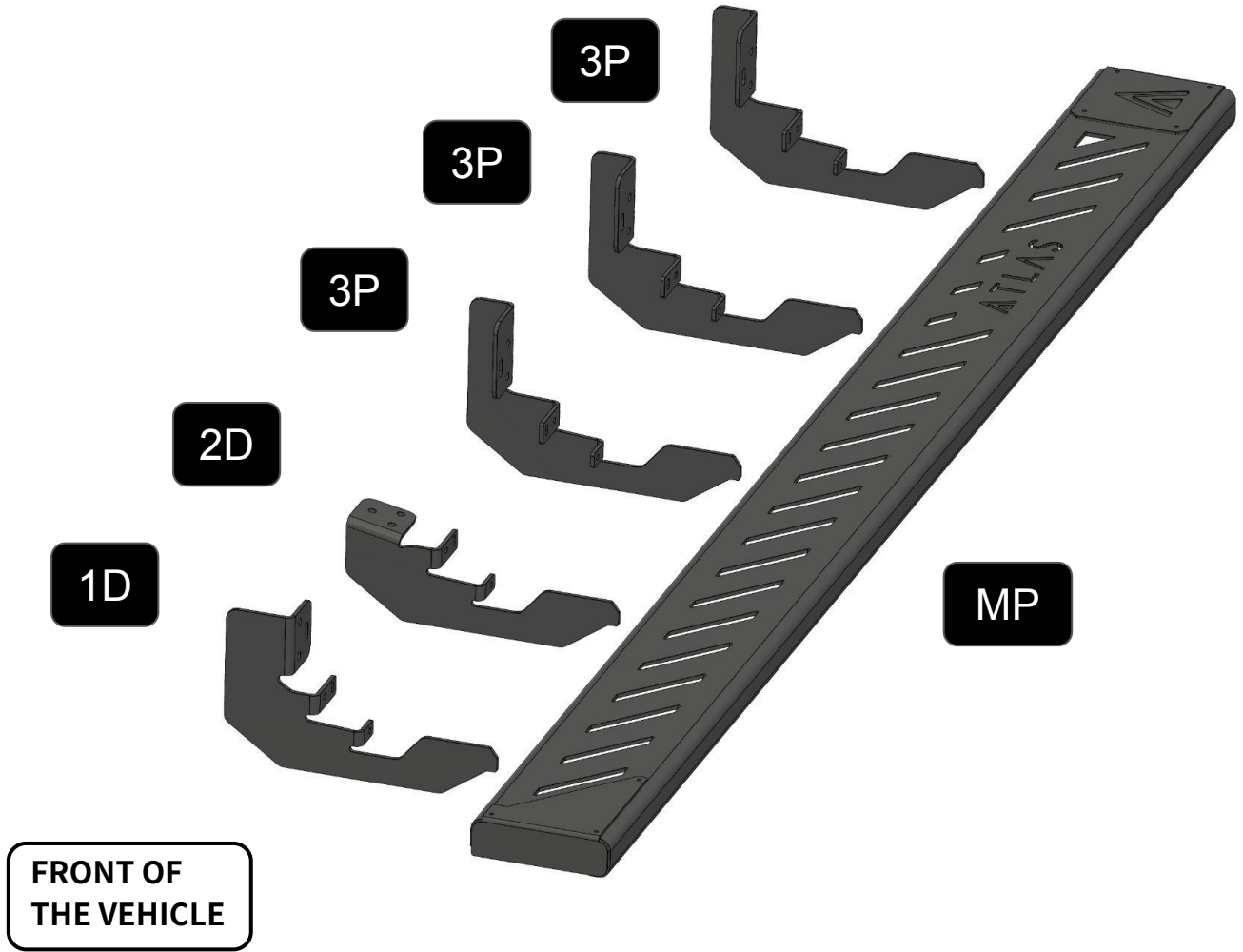
#### BRACKET IDENTIFICATION DETAILS



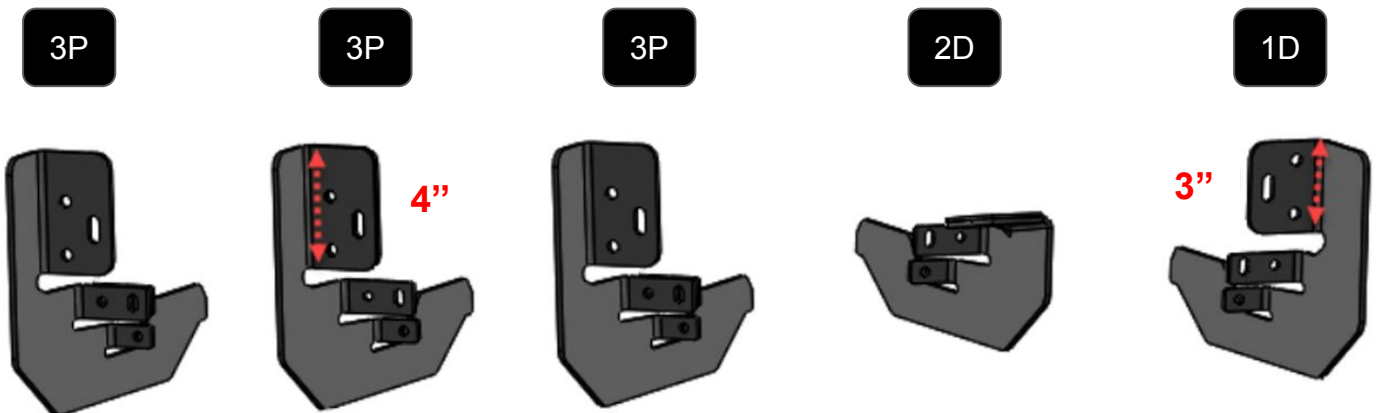
**SECTION 1**

**90" SIDE STEPS DRIVER**

PARTS INCLUDED ACCORDING TO YOUR SIDE STEP PURCHASE



BRACKET IDENTIFICATION DETAILS



90" SIDE STEPS PASSENGER/DRIVER

1 IDENTIFY ALL CORRESPONDING BRACKETS

Refer to the previous page to identify the brackets and place them near the vehicle in the correct order.



Passenger side

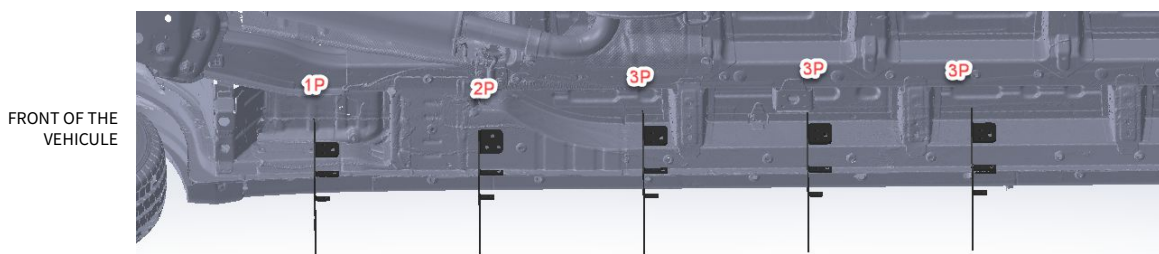
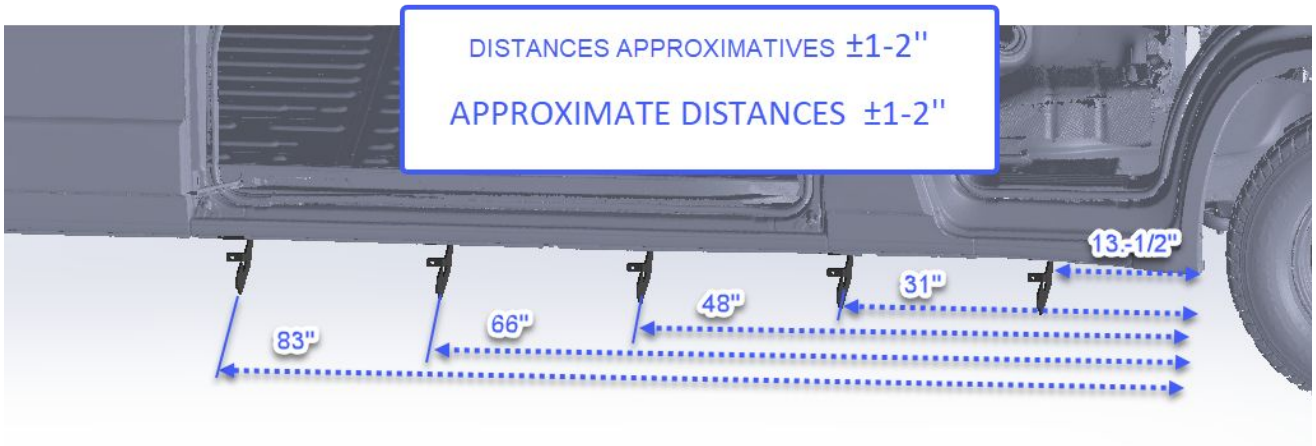


Driver



PASSENGER BRACKETS LAYOUT DIAGRAM

Use the same measurements for the driver side, starting from the front of the vehicle.



90" SIDE STEPS PASSENGER/DRIVER

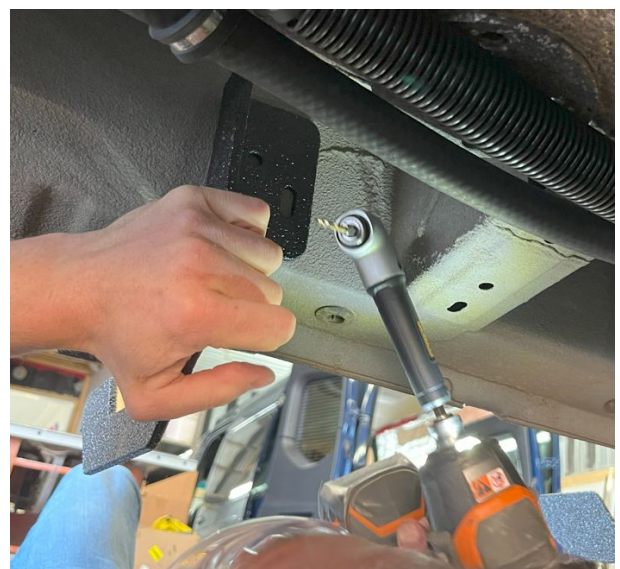
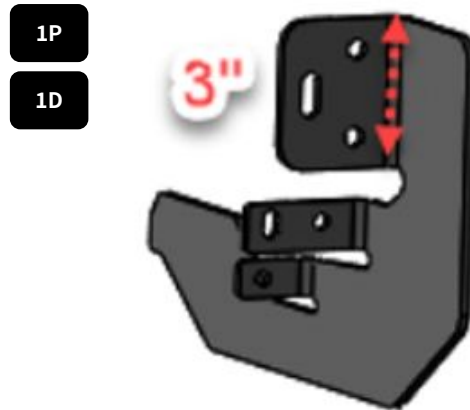
2 ATTACH BRACKET 1P TO THE VEHICLE  
(1D for driver side)



**\*\*There may be excess factory adhesive underneath the vehicle. In some cases, the excess must be removed using a utility knife.\*\***



**2.1** Position the bracket underneath the vehicle below the front passenger door (see photo below for approximate placement) and hold it firmly upward.



**2.2** Using a 3/16" drill bit and a right-angle drill, drill through the center of the slotted hole.

**\*\*\*\*There are often two layers of metal to drill through on the Ram ProMaster body. This note applies throughout the guide. \*\*\*\***

## 90" SIDE STEPS PASSENGER/DRIVER

### 2 ATTACH BRACKET 1P TO THE VEHICLE (1D for driver side)



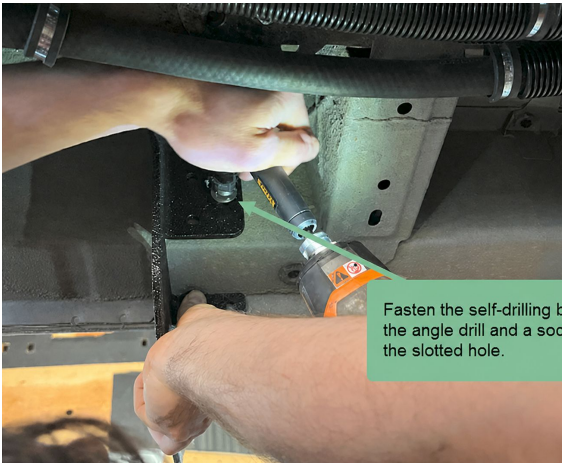
2.3 Apply metal paint



2.4 Install a 5/16" lock washer and a 5/16" washer onto a 5/16" × 1" sheet metal screw.

## 90" SIDE STEPS PASSENGER/DRIVER

### 2 ATTACH BRACKET 1P TO THE VEHICLE (1D for driver side)



**2.5** Drive the self-drilling screw through the bracket into the vehicle at the location where the hole was just drilled.



**2.6** Do not overtighten, to allow for vertical adjustment.

90" SIDE STEPS PASSENGER/DRIVER

**3** ATTACH THE REMAINING BRACKETS (2P AND 3P) TO THE VEHICLE (2D and 3D for driver side)

**3.1** Repeat steps 2.1 to 2.6 for all remaining brackets, positioning them according to the layout diagram shown in Step #1.

HARDWARE



Metal Screw 5/16" x 1"



Washer 5/16"



Lock Washer 5/16"

2P  
2D

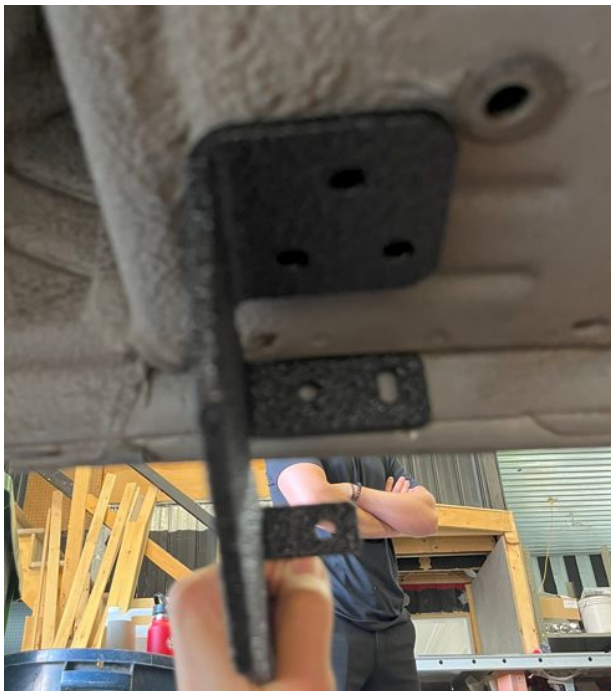


3P



Note: Bracket 2P is slightly different from the other brackets but is installed in the same manner. See the photos below for the approximate positioning of bracket 2P.

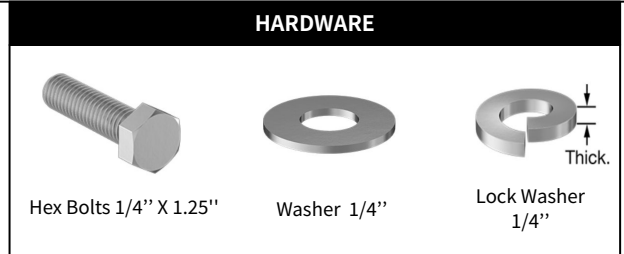
3P Support



90" SIDE STEPS PASSENGER/DRIVER

4

INSTALL THE 1/4" X 1.25 HEX HEAD BOLTS INTO THE SLOTTED HOLES.



4.1 Drill through the vehicle flange using a 1/4" metal drill bit at the center of the slotted hole located at the bottom of the brackets.



4.2 Apply metal paint inside the hole.



4.3 Insert a 1/4" washer onto a 1/4" x 1.25" bolt.

4.4 Insert the 1/4" bolt through the vehicle flange and the bracket.

4.5 Insert a 1/4" washer and a 1/4" nylon lock nut

4.6 Do not overtighten, to allow for adjustment.

4.7 Repeat these steps for all five brackets.

## 90" SIDE STEPS PASSENGER/DRIVER

### 5 ADJUST THE HEIGHT OF THE 5 BRACKETS

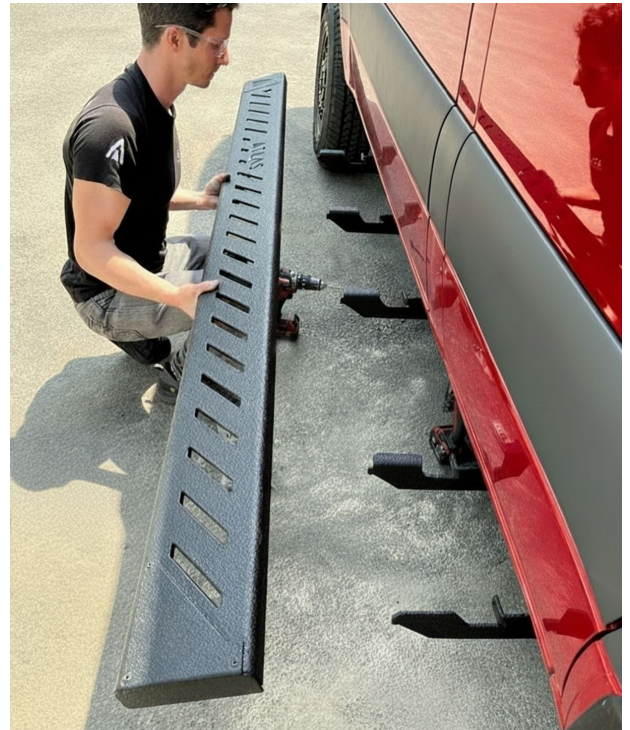


**5.1** Place the side step onto the brackets.

**5.2** Make sure that the side step makes contact with all 5 brackets.

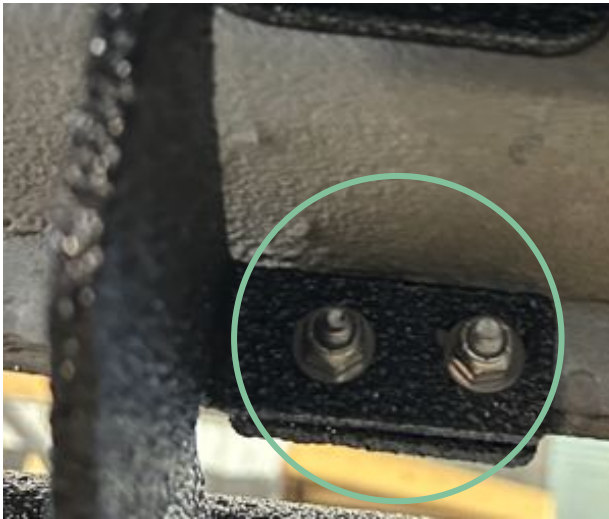
**5.3** Raise or lower the brackets slightly as needed. Retighten the screws and bolts.

**5.4** Remove the side step.



90" SIDE STEPS PASSENGER/DRIVER

**6** FULLY SECURE THE 5 BRACKETS TO THE VEHICLE



HARDWARE



Hex bolt 1/4" X 1.25"



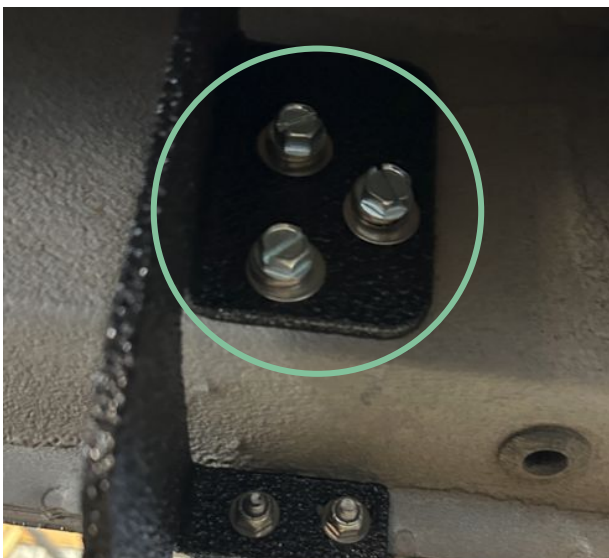
Washer 1/4"



Lock Washer 1/4"

**6.1** Repeat steps 4.1 to 4.5 for the second hole in the vehicle flange and tighten securely.

**7** FULLY SECURE THE 5 BRACKETS TO THE VEHICLE



HARDWARE



Metal screw 5/16" x 1"



Washer 5/16"



Lock Washer 5/16"

**7.1** Pre-drill all remaining holes using a 3/16" drill bit to install the remaining ten 5/16" self-drilling screws.

**7.2** Install a 5/16" lock washer and a 5/16" washer onto a 5/16" sheet metal screw.

**7.3** Fasten all sheet metal screws into the remaining holes in the brackets.

## 90" SIDE STEPS PASSENGER/DRIVER

8

### ATTACH THE SIDE STEP TO THE BRACKETS

#### HARDWARE



Hex Head Self-Drilling  
screw #14 x 1.25"



Washer 1/4"



Lock Washer  
1/4"



**8.1** Place the side step onto the brackets.

**8.2** Adjust the front-to-back position of the side step. Align it with the front edge of the passenger door.

(Align with the driver door for the driver-side step.)

**8.3** Install a 1/4" lock washer and a 1/4" washer onto a #14 self-drilling screw.

**8.4** Hold the side step firmly against the brackets.

**8.5** Fasten the self-drilling screw through the bracket and into the side step.

**8.6** Repeat for the remaining brackets.



90" SIDE STEPS PASSENGER/DRIVER

9 Apply "EZLINER" to all bolt heads

EZLINER



IMAGE FOR REFERENCE



## 36" SIDE STEPS DRIVER

---



DRIVER

### 36" SIDE STEPS DRIVER

LIST OF HARDWARE INCLUDED BY MODEL



**8x**  
Metal Screw 5/16" x 1"



**7x**  
Washer 5/16"



**6x**  
Lock Washer 5/16"



**4x**  
Hex Head Self-Drilling  
Screw #14 x 1.25"



**4x**  
Hex Bolt  
1/4" X 1.25"



**11x**  
Washer 1/4"



**4x**  
Nylon Lock Nut 1/4"



**2x**  
Lock Wash 1/4"

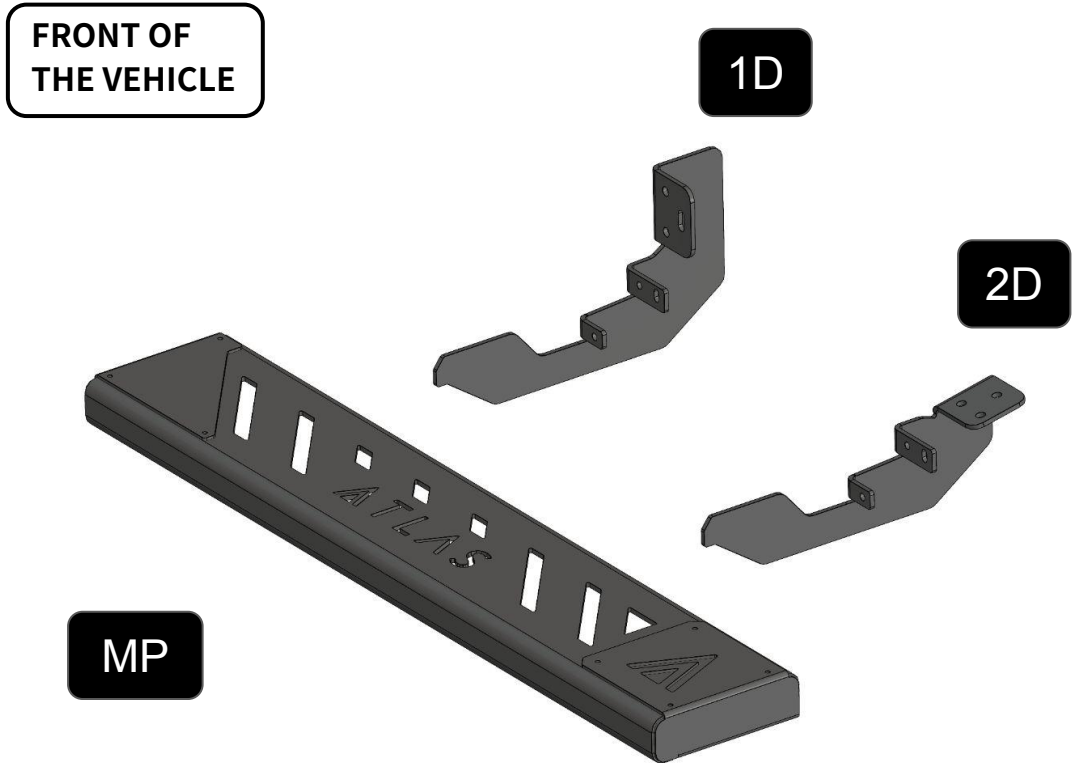


**1x**  
Anti-seize

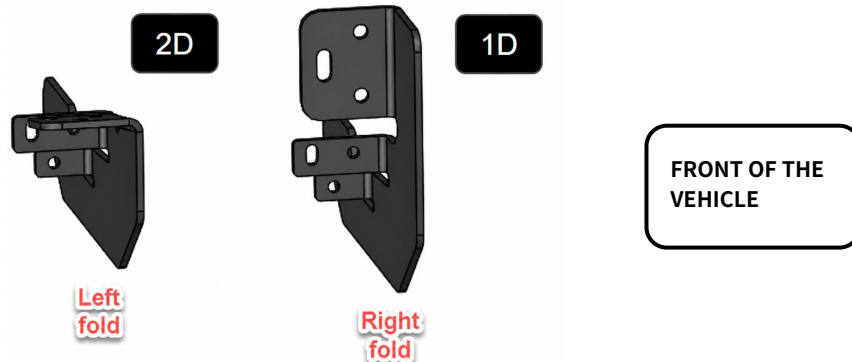
**\*\*IMPORTANT :** Apply anti-seize compound to the threads of all bolts before installing the nut. **\*\***

### 36" SIDE STEPS DRIVER

MATERIALS INCLUDED ACCORDING TO YOUR SIDE STEPS PURCHASE



### BRACKETS IDENTIFICATION DETAILS



## 36" SIDE STEPS DRIVER

### 10 IDENTIFY ALL CORRESPONDING BRACKETS

Refer to the previous page to identify the brackets and place them near your vehicle in the correct order.

DRIVER SIDE

FRONT OF THE  
VEHICLE

1D

2D

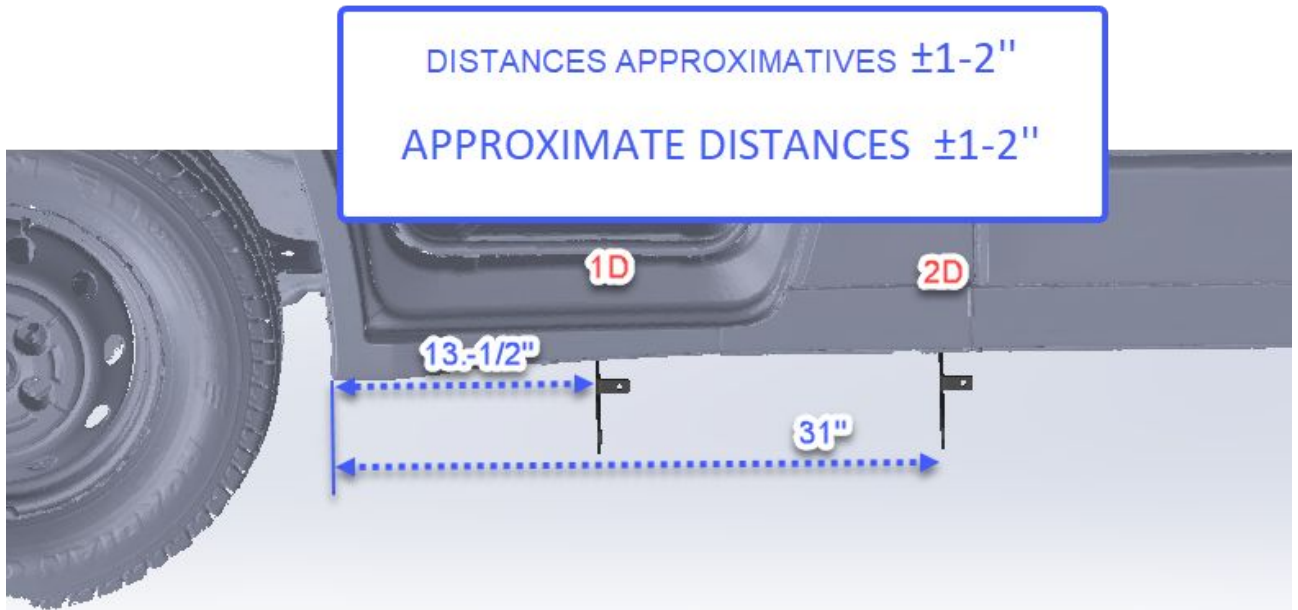


## 36" SIDE STEPS DRIVER

11

Installation of Brackets 1D, 2D, and 3D

**11.1** Brackets 1D and 2D are installed exactly the same way as those used for the 90" side steps: refer to the steps in Section #1.



# QUESTION?

---

If you need assistance or have any questions during installation, please contact us. We will be happy to assist you.

TEL: (819) 582-2612

INFO@ATLASROADCAMP.COM

4615, BOUL. DE PORTLAND, SHERBROOKE

**ATLAS**  
ROADCAMP

