



INSTALLATION GUIDE

MERCEDES SPRINTER

98" SIDE STEPS - PASSENGER/DRIVER

36" SIDE STEPS - DRIVER

MODELS



98" SIDE STEPS DRIVER



98" SIDE STEPS
PASSENGER



36" SIDE STEPS
DRIVER

TABLE OF CONTENTS |

	WARNINGS	3
	MAINTENANCE	4
	REQUIRED MATERIALS NOT INCLUDED	4
	INSTALLATION	5
SECTION 1	98" SIDE STEPS PASSENGER/DRIVER	5
SECTION 2	36" SIDE STEPS DRIVER	17

SAFETY WARNINGS

****ATLAS RC disclaims all liability for injuries related to the installation, maintenance, or use of an ATLAS RC accessory****

The initial assembly of a side step may take between 2 and 4 hours.

Always wear cut-resistant gloves and safety glasses.

If you have any doubts during assembly, stop the installation and contact your retailer.

TECHNICAL WARNINGS

****FOR ALL BOLTS ASSEMBLED WITH NYLON LOCK NUTS, IT IS MANDATORY TO APPLY THE ANTI-SEIZE COMPOUND PROVIDED WITH YOUR HARDWARE KIT TO ENSURE THAT THE BOLT/NUT ASSEMBLY DOES NOT SEIZE.****

- All bolts and nuts must be tightened by hand (using ratchets, Allen keys, and a torque wrench) according to the torque specifications indicated in this guide.
- Nylon lock nuts (Nylock) are used in the assembly of ATLAS RC accessories. Repeated tightening and loosening of this type of nut is not recommended. It is therefore important to follow the tightening sequence specified in this manual.

GENERAL WARNINGS

- Limitation of Liability by ATLAS RC: ATLAS RC is not responsible for damages resulting from improper use, overloading, incorrect assembly, abuse, accidents, negligence, improper installation, theft, or unauthorized modifications.
- As the owner of an ATLAS RC accessory, it is your responsibility to review the company's Terms and Conditions on its website.
- Any modification or alteration to ATLAS RC accessories not approved by ATLAS RC may void the product warranty.
- The addition of components not approved by ATLAS RC may void the product warranty.

MAINTENANCE

1. All torque specifications must be verified after the first 100 km and 500 km driven following installation of the bracket.
2. Check that all hardware remains properly tightened annually.

REQUIRED MATERIALS NOT INCLUDED

EZLINER



METAL PAINT



98" SIDE STEPS PASSENGER/DRIVER



DRIVER



PASSENGER

98" SIDE STEPS PASSENGER/DRIVER

LIST OF HARDWARE INCLUDED BY MODEL



10x
Hex Bolt
1/4" X 1.25"



10x
Nylon Lock Nut 1/4"



31x
Washer 1/4"



10x
Lock Washer 1/4"
Thick.



5x
Hex Bolt 3/8" X 1.75"



5x
Washer 3/8"



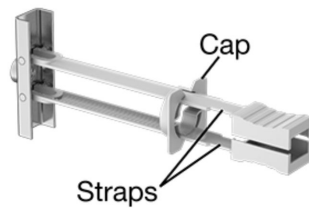
5x
Lock Washer 3/8"
Thick.



6x
3/4" Yellow Zinc Washer



12x
Hex Head Self-Drilling
Screw#14 x 1.25"



6x
Toggle Anchors
Cap
Straps

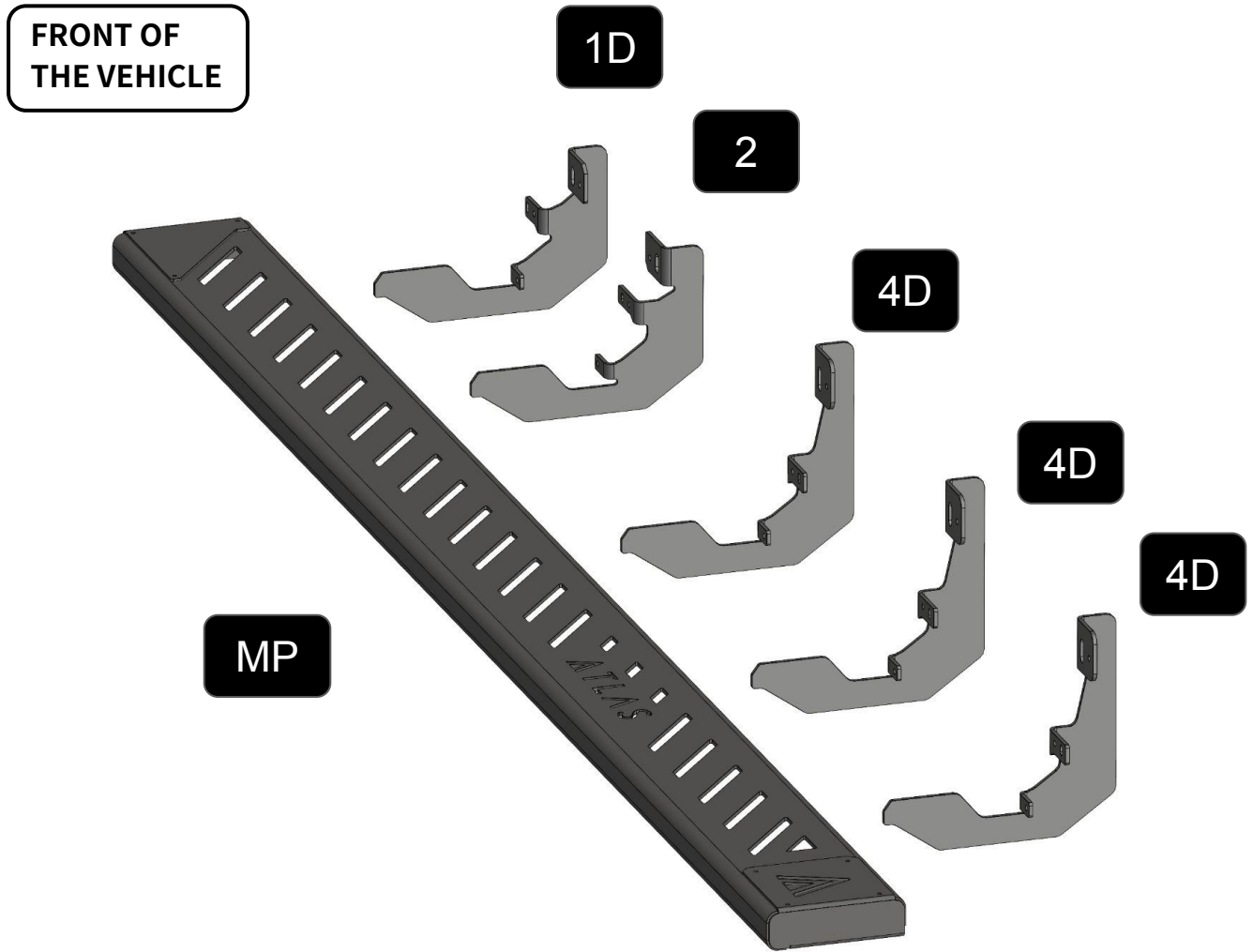


1x
Anti-seize

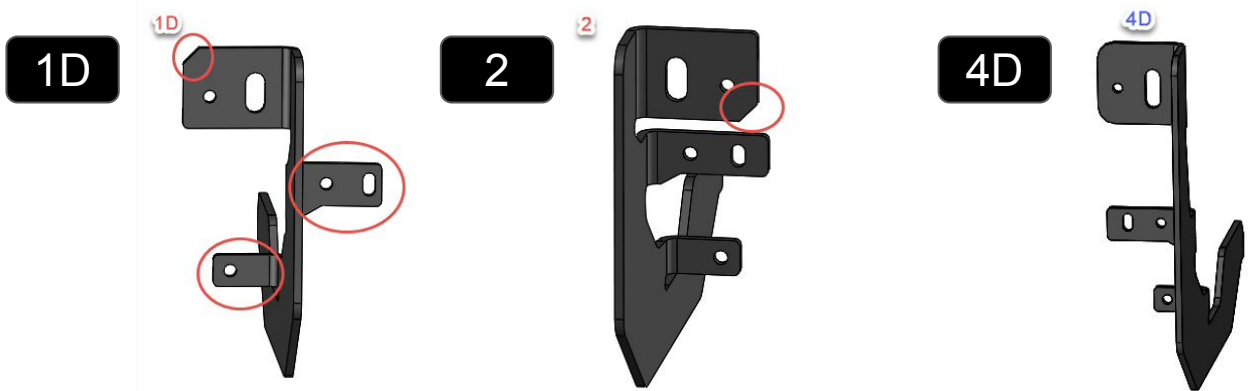
****IMPORTANT :** Apply anti-seize
cto the threads of all bolts before
installing the nuts**

98" SIDE STEPS PASSENGER/DRIVER

PARTS INCLUDED ACCORDING TO YOUR SIDE STEP PURCHASE

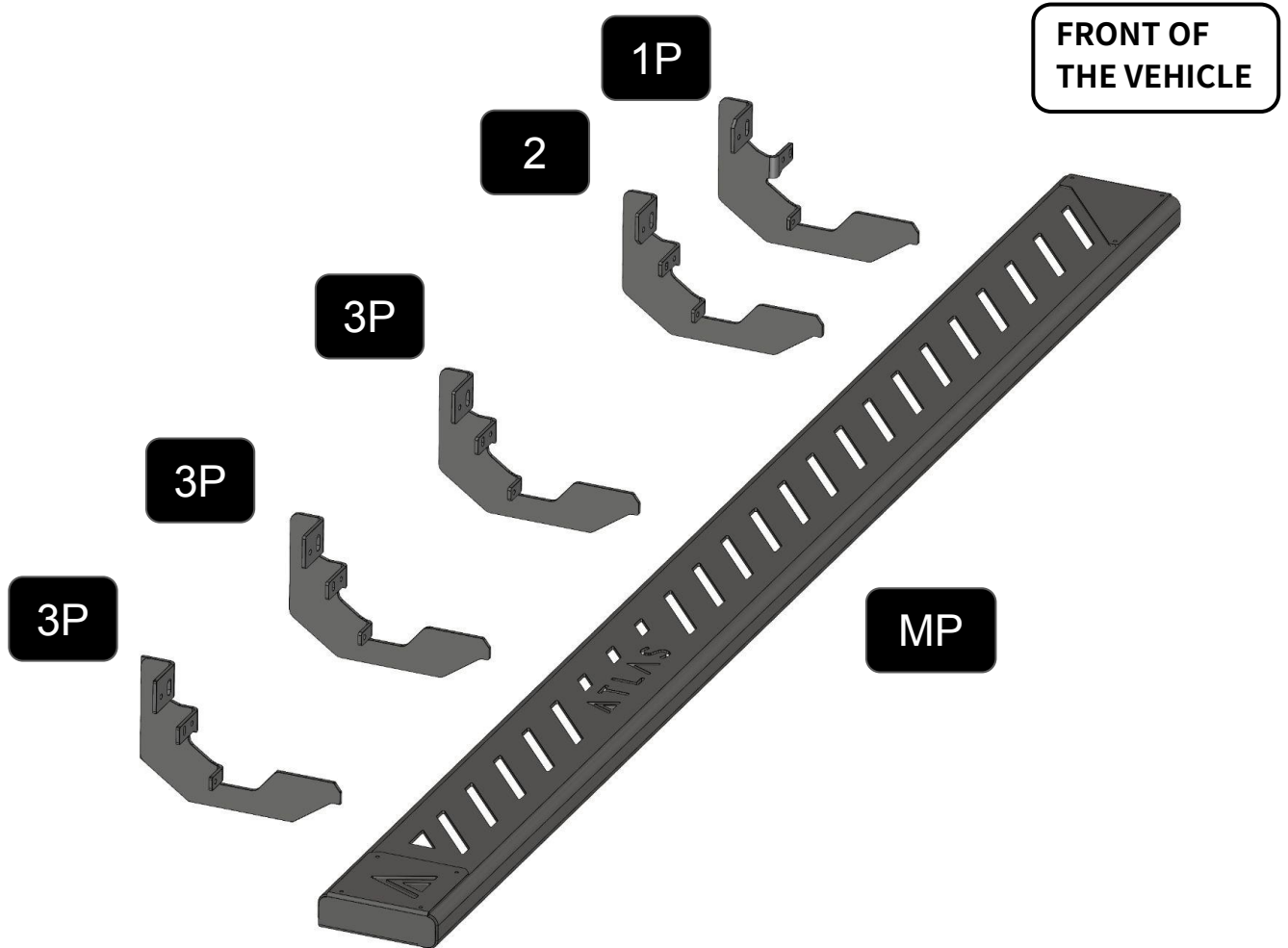


BRACKET IDENTIFICATION DETAILS

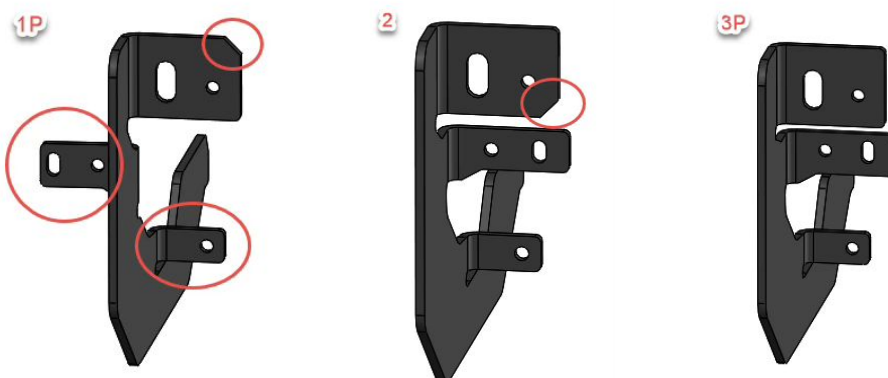


98" SIDE STEPS PASSENGER

PARTS INCLUDED ACCORDING TO YOUR SIDE STEP PURCHASE



BRACKET IDENTIFICATION DETAILS



98" SIDE STEPS PASSENGER/DRIVER

1 IDENTIFY ALL CORRESPONDING BRACKETS

Refer to the previous page to identify the brackets and place them near the vehicle in the correct order.

Passenger

FRONT OF THE VEHICLE



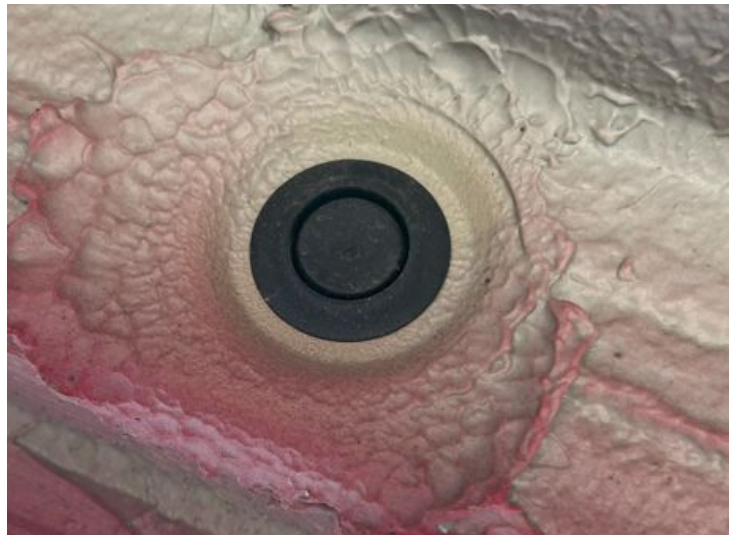
Driver

FRONT OF THE VEHICLE



2 REMOVE THE CAPS

Remove the first 5 black rubber caps underneath the vehicle, starting from the front

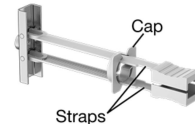


98" SIDE STEPS PASSENGER/DRIVER

3

INSTALLATION OF THE 5 TOGGLE ANCHORS WITH YELLOW ZINC WASHERS

HARDWARE



Toggle anchors



3/4" Yellow zinc washer



3.1 Insert the anchor head into the hole



3.2 Gently pull the serrated straps until the washer is seated against the vehicle



3.3 Cut off the excess strap ends

98" SIDE STEPS PASSENGER/DRIVER

4

ATTACH ALL BRACKETS IN THEIR RESPECTIVE POSITIONS ON THE VEHICLE

QUINCAILLERIE



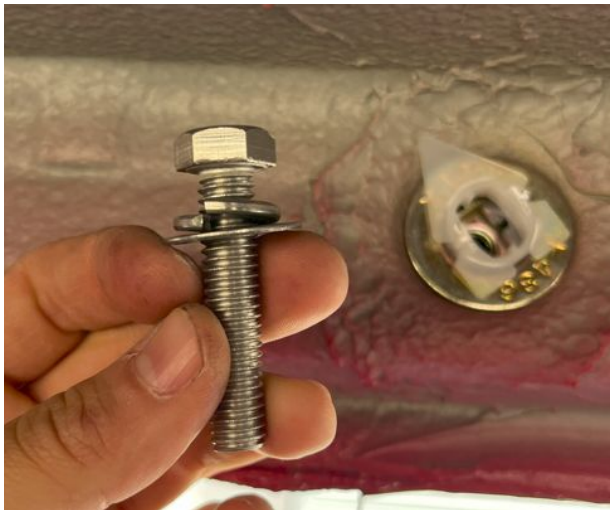
Hex bolt 3/8" X 1.75"



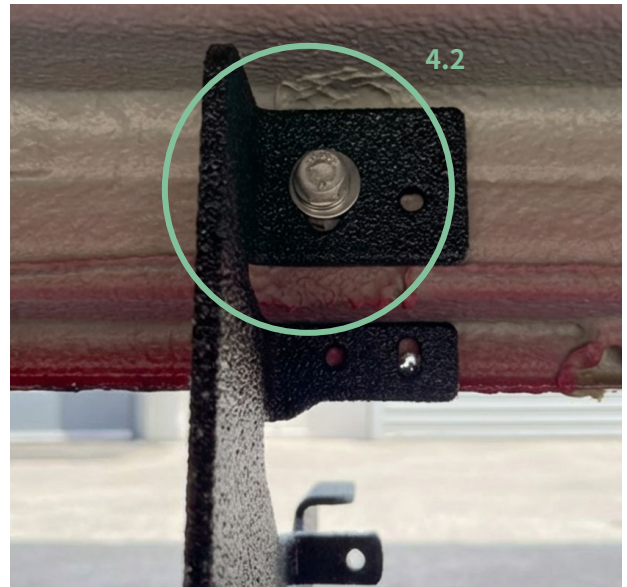
Washer 3/8"



Lock Washer 3/8"



4.1 Insert a 3/8" lock washer and a 3/8" flat washer onto each 3/8" x 1.75" hex bolt.



4.2 Press the bracket firmly upward against the vehicle and align the slotted (long) hole with the yellow zinc washers.

4.3 Drive the 3/8" x 1.75" bolt to hold the bracket in place, but **DO NOT** overtighten, to allow for adjustment.

4.4 Repeat these steps for all 5 brackets.

98" SIDE STEPS PASSENGER/DRIVER

5

Drill the vehicle lip using a 1/4" metal drill bit at the center of the lower slotted hole of the brackets.



5.1 Drill the vehicle lip using a 1/4" metal drill bit at the center of the lower slotted hole of the brackets



5.3 Place a 1/4" washer onto a 1/4" x 1.25" hex bolt.

HARDWARE



Hex bolt 1/4" X 1.25"



Washer 1/4"



Lock Washer
1/4"
Thick.



5.2 Apply metal paint to the hole

5.4 Insert the 1/4" bolt through the vehicle lip and the bracket.

5.5 Install a 1/4" washer and a 1/4" nylon lock nut.

5.6 Do not overtighten, to allow for adjustment.

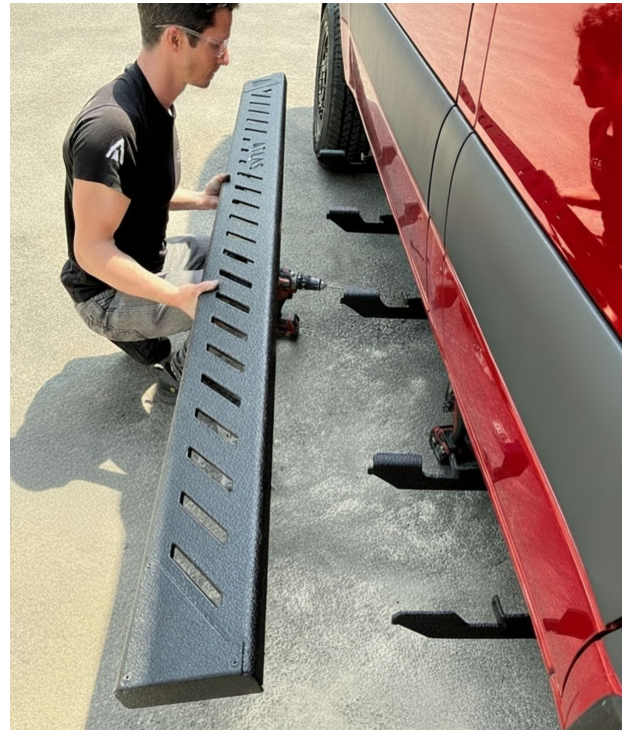
5.7 Repeat the steps for all 5 brackets.

98" SIDE STEPS PASSENGER/DRIVER

6

ADJUST THE HEIGHT OF THE 5 BRACKETS

- 6.1 Place the side steps onto the brackets.
- 6.2 Make sure the side steps is in contact with all 5 brackets.
- 6.3 Raise or lower the brackets slightly as needed. Tighten the bolts and screws.
- 6.4 Remove the side steps.

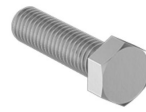


98" SIDE STEPS PASSENGER/DRIVER

7

Securely attach all 5 brackets to the vehicle

HARDWARE



Hex Bolt 1/4" X 1.25"



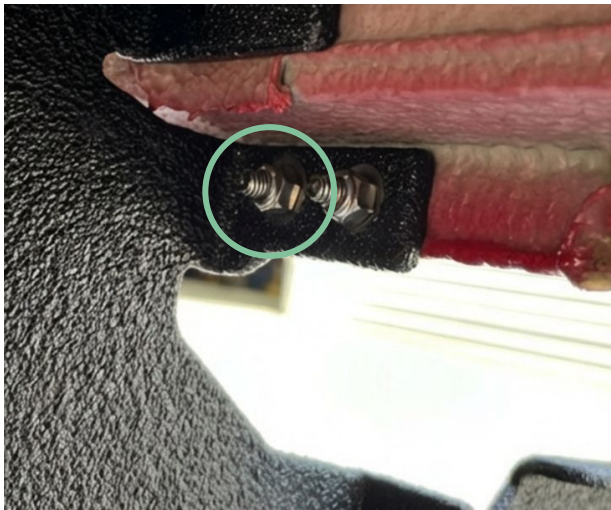
Washer 1/4"



Lock Washer 1/4"
Thick.



Hex head self-drilling screw #14 x 1.25"



7.1 Repeat steps 5.1 to 5.7 for the second hole in the vehicle lip and tighten securely.



7.2 Insert a 1/4" lock washer and a 1/4" washer onto a #14 x 1.25" self-drilling screw



7.3 Drive the self-drilling screw through the bracket into the vehicle

7.4 Repeat these steps for all 5 brackets.

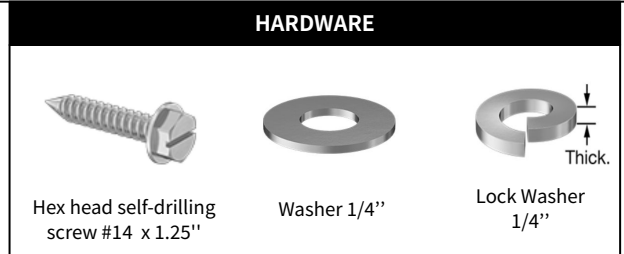
98" SIDE STEPS PASSENGER/DRIVER

8

Attach the side steps to the brackets



8.1 Place the side steps onto the brackets.



8.2 Adjust the front-to-rear position of the side steps. Align them with the front edge of the front passenger door.



8.3 Insert a 1/4" lock washer and a 1/4" washer onto a #14 self-drilling screw.

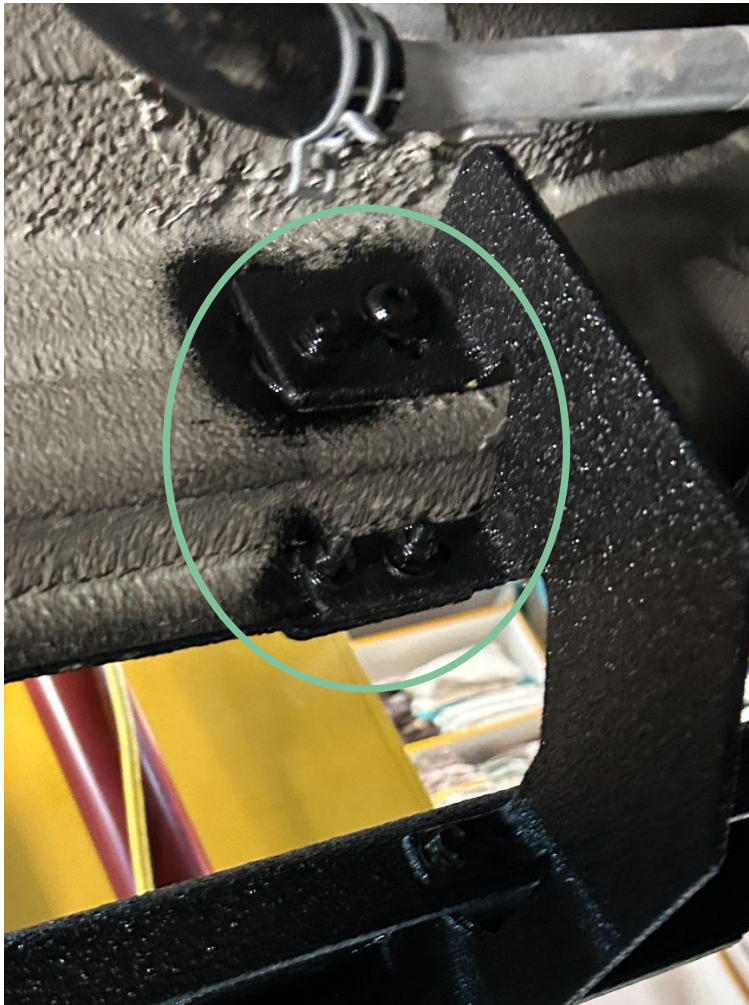
8.4 Hold the side steps firmly against the brackets.

8.5 Drive the self-drilling screw through the bracket and the side steps.

8.6 Repeat for the remaining brackets.

98" SIDE STEPS PASSENGER/DRIVER

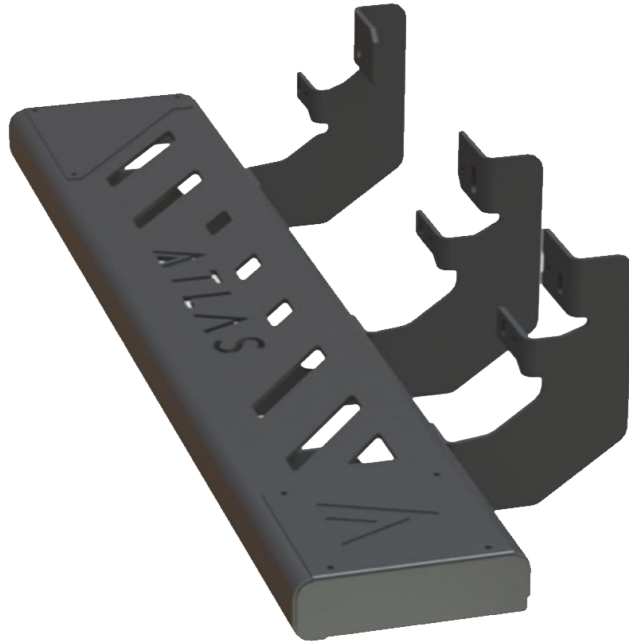
9 Apply "EZLINER" to all bolt heads



EZLINER



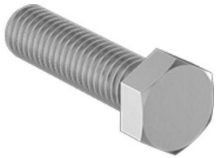
36" SIDE STEPS DRIVER



DRIVER

36" SIDE STEPS DRIVER

LIST OF HARDWARE INCLUDED BY MODEL



6x
Hex Bolt
1/4" X 1.25"



6x
Nylon Lock Nut 1/4"



20x
Washer 1/4"



7x
Lock Washer 1/4"



2x
Hex Bolt 3/8" X 1.75"



2x
Washer 3/8"



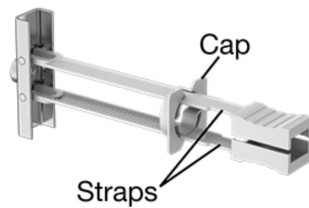
2x
Lock Washer 3/8"



3x
3/4" Yellow Zinc Washer



9x
Hex Head Self-Drilling
Screw #14 x 1.25"



3x
Toggle Anchors

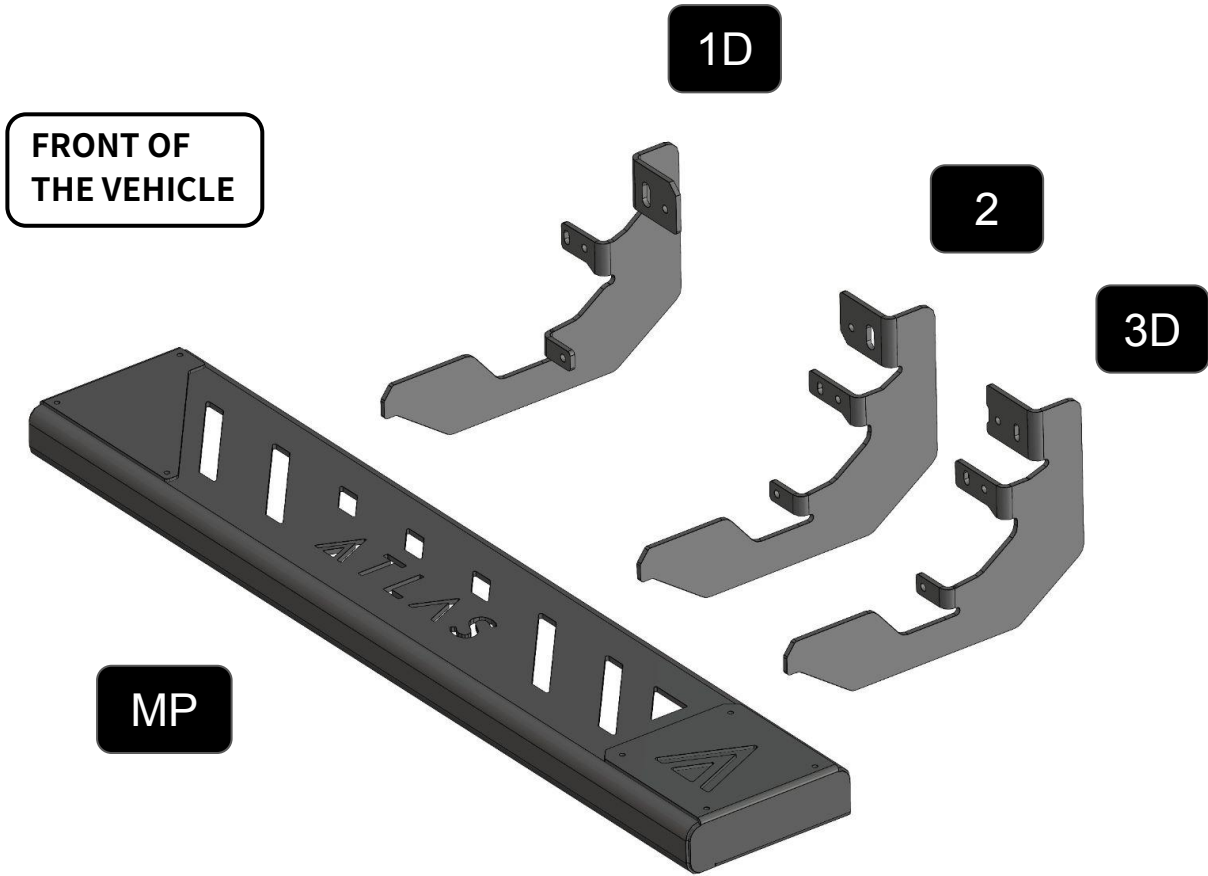


1x
Anti-seize

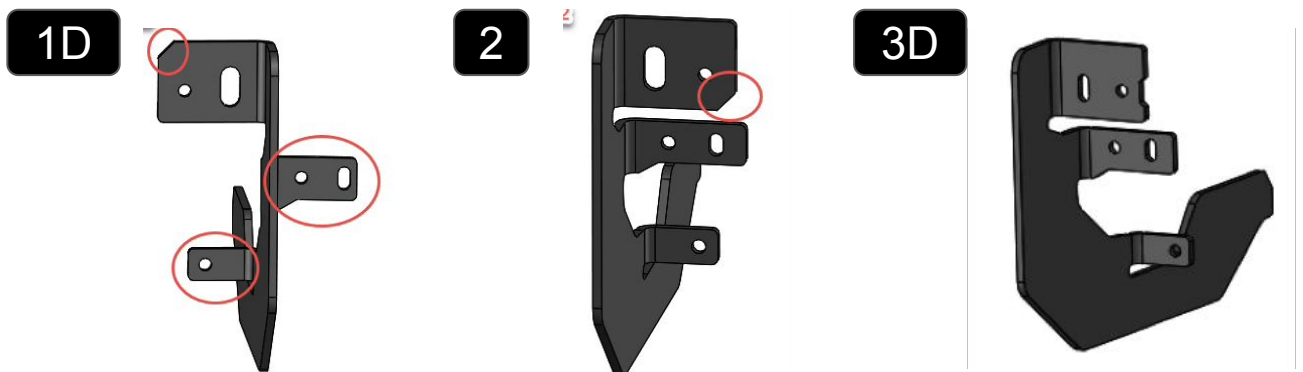
****IMPORTANT :** Apply anti-seize compound to the threads of all bolts before installing the nut. **

36" SIDE STEPS DRIVER

MATERIALS INCLUDED ACCORDING TO YOUR SIDE STEPS PURCHASE



BRACKETS IDENTIFICATION DETAILS



36" SIDE STEPS DRIVER

10 IDENTIFY ALL CORRESPONDING BRACKETS

Refer to the previous page to identify the brackets and place them near your vehicle in the correct order.

DRIVER

FRONT OF THE
VEHICLE

1D

2

3D

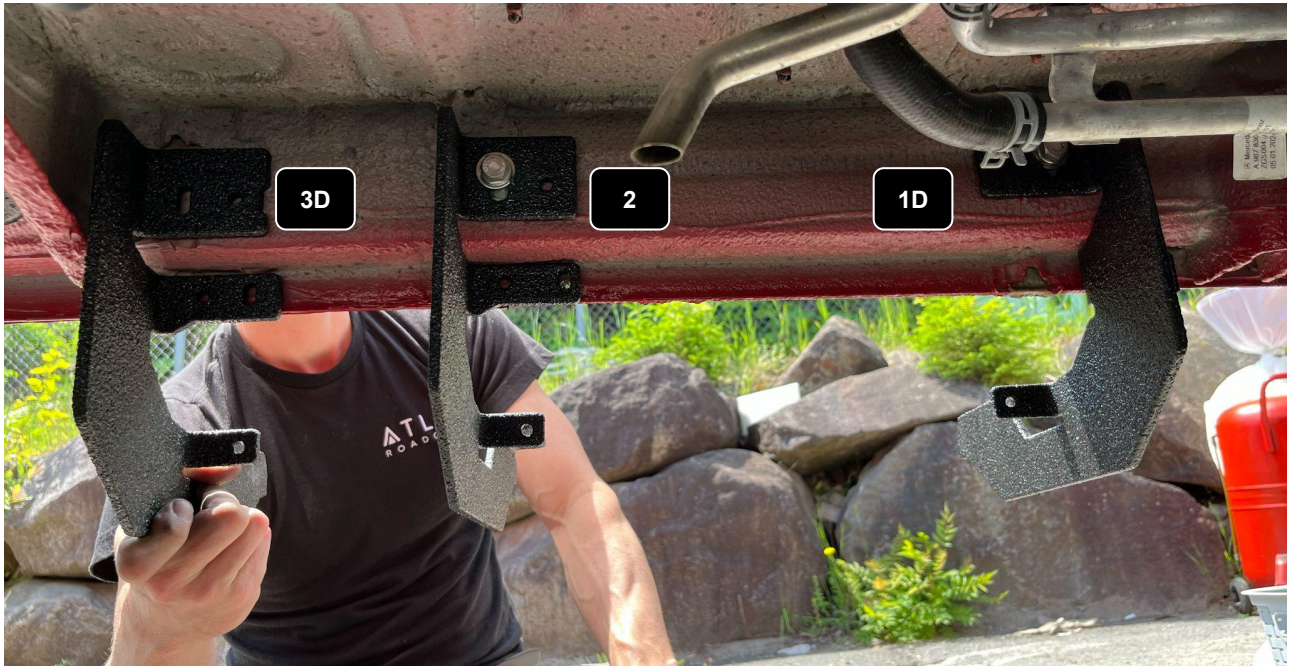


36" SIDE STEPS DRIVER

11

Installation of Brackets 1D and 2D

11 Brackets 1D and 2D are installed exactly the same way as those used for the 98" side steps: refer to the steps in Section #1.

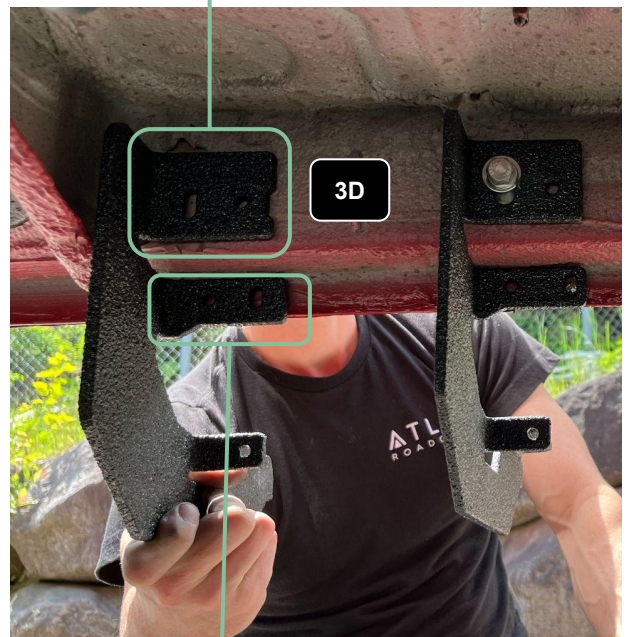


36" SIDE STEPS DRIVER

12 Installation of the 3D bracket without toggle anchors



12.1 Position the 3D bracket against the vehicle frame.



Hex head self-drilling screw #14 x 1.25"

Hex bolt 1/4" X 1.25"

12.2 The 3D bracket is installed in the same way as all others, except that it does not use toggle anchors.

It is installed using only self-drilling screw, as described in Section 1 of the manual.

QUESTION?

If you need assistance or have any questions during installation, please contact us. We will be happy to assist you.

TEL: (819) 582-2612
INFO@ATLASROADCAMP.COM
4475, BOUL. DE PORTLAND, SHERBROOKE

ATLAS
ROADCAMP

